

# Virtual Desktop Quick Start Guide 2014-2015

You can connect to your virtual desktop from practically any Internet-accessible device. There are two different methods you can use to connect to your virtual desktop. One requires you to install a free program, or app, called VMware Horizon View Client that is available for all platforms (Windows, Mac, Android, iPad, etc.). The other method requires only a web browser (Internet Explorer, Firefox, Chrome, Safari, etc.). Both methods are outlined below.

## VMware Horizon View Client

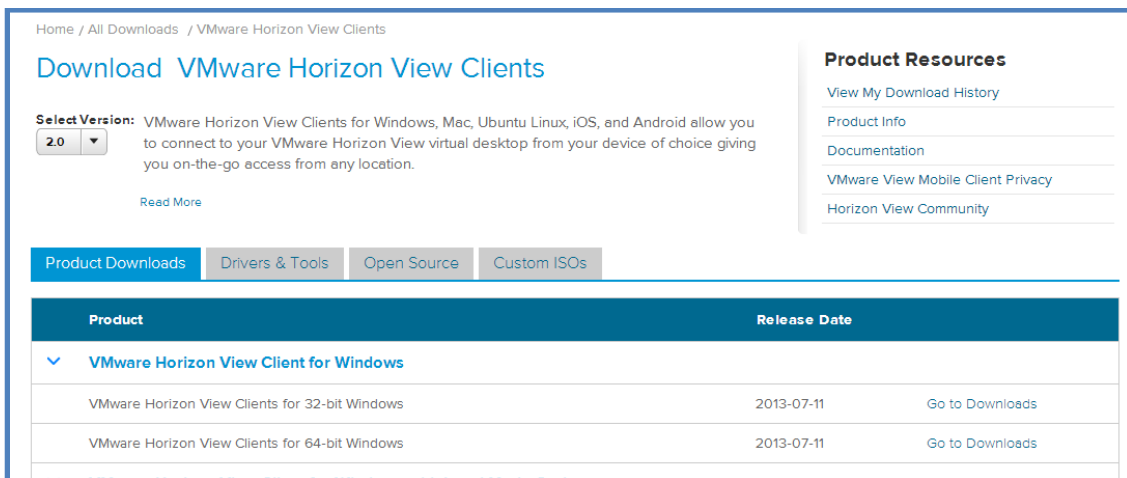
1. Open your web browser of choice and go to <https://view.bchornets.com> (note the “s” at the end of http at the beginning, this is required).
2. Click on the **Install VMware Horizon View Client** option



3. If using a Windows computer, determine whether it is 32-bit or 64-bit. This can be determined by clicking on **Start** > right-click **Computer** > click **Properties**, and then look for System Type.



4. Choose the appropriate download for your computer. If you have a Windows computer, you will use one of the first two options (**VMware Horizon View Client for 32-bit Windows** or **VMware Horizon View Client for 64-bit Windows**) and then click **Go to Downloads** next to it.

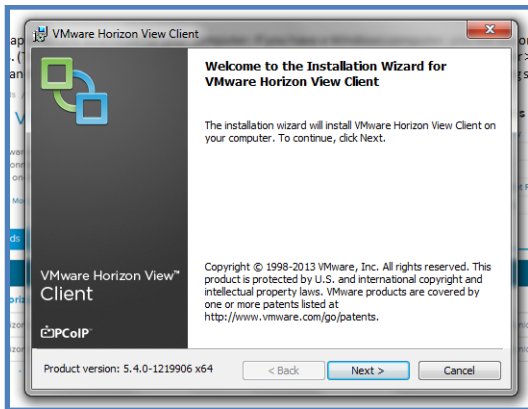


# Virtual Desktop Quick Start Guide 2014-2015

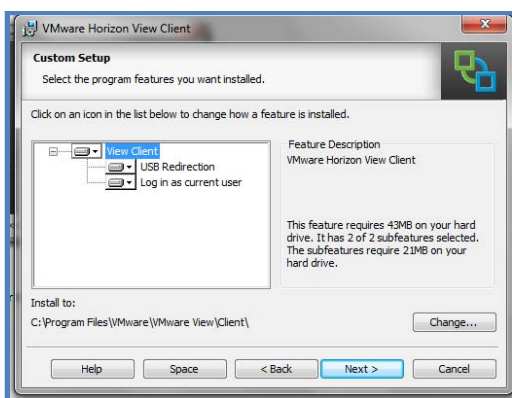
5. After you have chosen the version to download, it will open up a page for the download. Click **Download**.



6. When prompted, save the download and save the file to an easily accessible location (such as the Desktop on a Windows computer).
7. Once the download completes, open it (this will look similar to the way it does when you download any file).
8. If your computer asks you to allow this program to make changes to your computer, click **Yes**.
9. Once the installation welcome page appears, click **Next**.

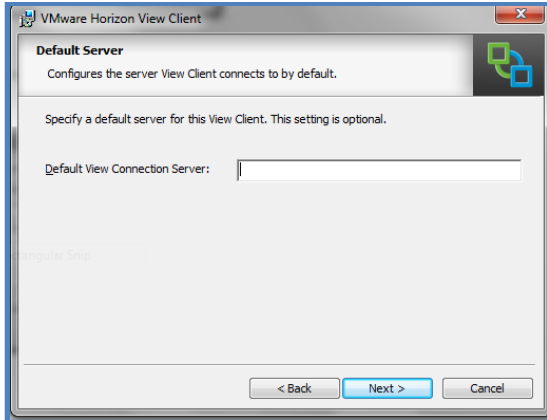


10. Accept the terms and then click **Next**.
11. Accept the default installation options and click **Next**.

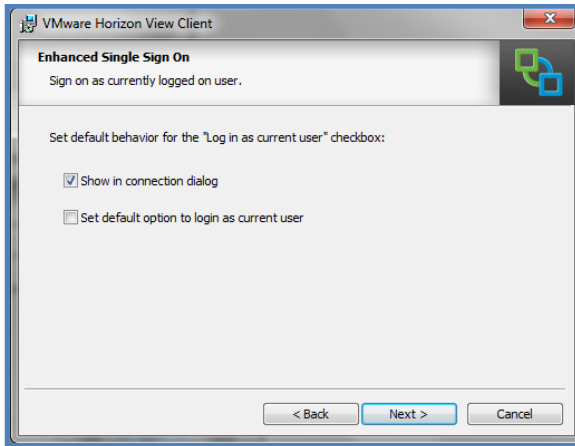


12. Enter **view.bchornets.com** as the connection server and then click **Next**.

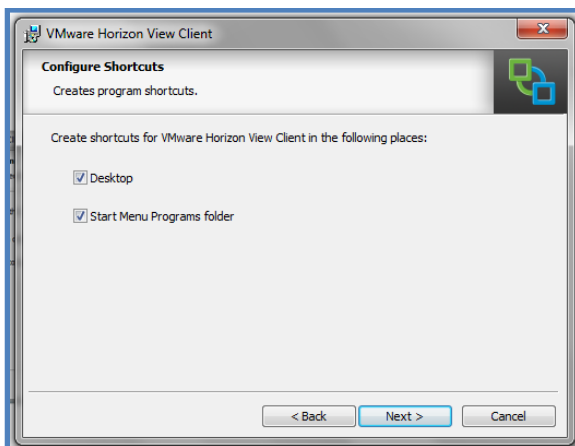
# Virtual Desktop Quick Start Guide 2014-2015



13. Accept the default Enhanced Single Sign On options and click **Next**.

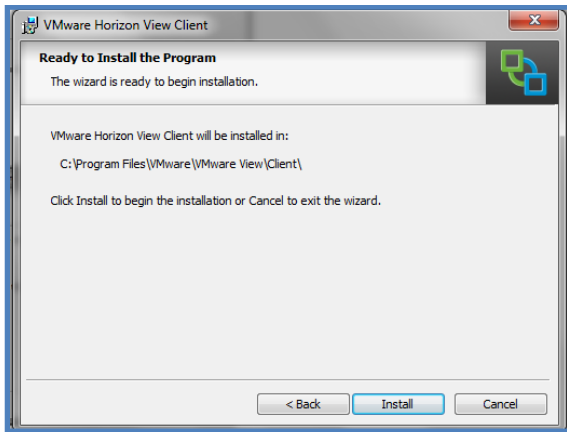


14. Accept the default shortcut options and click **Next**.



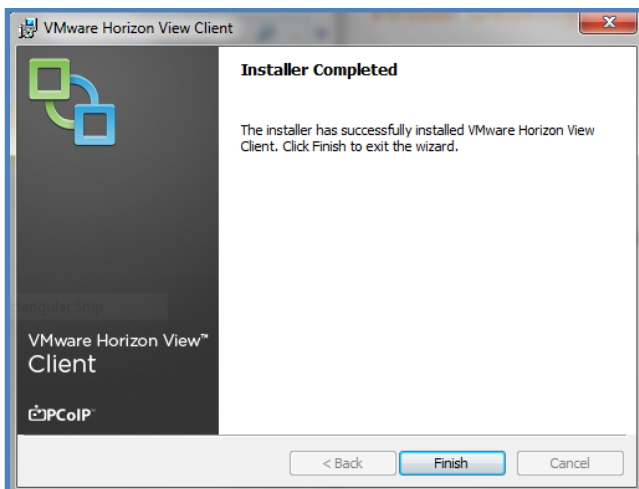
# Virtual Desktop Quick Start Guide 2014-2015

15. Click **Install**.



16. Wait patiently while the installation completes.

17. After the installation has finished, click **Finish**.



18. Restart your computer when prompted to do so.

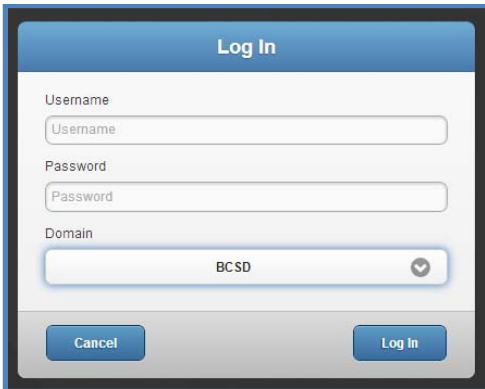
# Virtual Desktop Quick Start Guide 2014-2015

## Web Browser (Web Access)

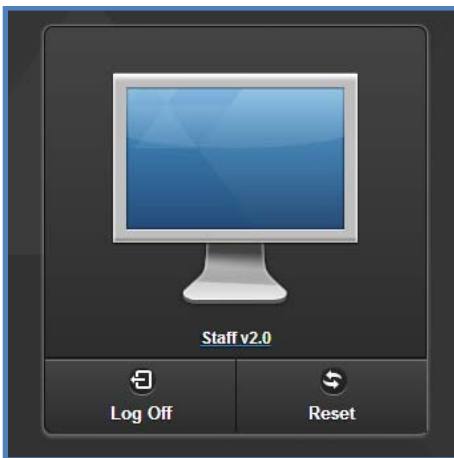
1. Open your web browser of choice and go to <https://view.bchornets.com> (note the "s" at the end of http at the beginning, this is required).
2. Click on the **VMware Horizon View HTML Access** option



3. When you get to this screen, enter your username and password and then click **Log In**. This is the same information that you use to log on to a computer at school.

A screenshot of a "Log In" form. The form has a blue header with the text "Log In". Below the header, there are three input fields: "Username" with a placeholder "Username", "Password" with a placeholder "Password", and "Domain" with a dropdown menu showing "BCSD". At the bottom of the form, there are two buttons: "Cancel" and "Log In".

4. When you get to this screen, click on the virtual computer that you want to access (Student v2.0, Staff v2.0, etc.)



5. If you are asked to enter a connection server at any point, use **view.bchornets.com**